

POWTEK

K BALL ALUMINUM VIBRATOR



DESCRIPTION

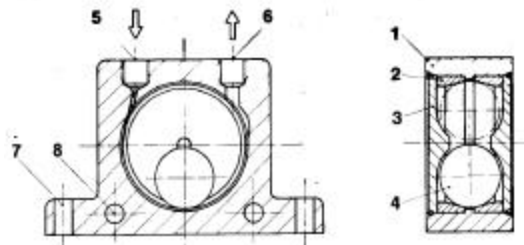
Manufactured with a rustproof extruded aluminum body fitted with hardened steel races on which a steel ball rotates.

Nylon endplates are located on either side to contain the ball and prevent the entry of dust and water, thus allowing the unit to be used in dusty or wet environments. Inlet and exhaust port have standard pipe threads, allowing the exhaust air to be piped away, ensuring that no restriction is imposed on exhaust air. Four mounting holes are provided, two vertically and two horizontally for handling difficult mounting positions.

APPLICATIONS

Series K, which is small in overall size, pneumatic ball vibrators frequency can be regulated by adjusting the flow of air to the vibrator making them useful for:

- Assisting the flow of material from chutes and hoppers
- Preventing bottles and similar objects from locking together and blocking conveyor systems
- Compaction of material in containers or molds.
- Separation of various sizes of material on screens

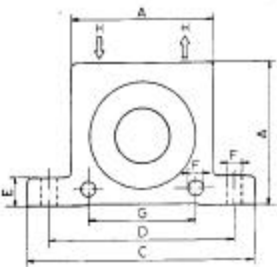


1. Extruded aluminum alloy body
2. Hardened ground steel alloy races
3. Nylon endplates
4. Hardened lapped ball
5. Air inlet
6. Air exhaust
7. Base mounting holes
8. Lateral mounting holes

PERFORMANCE DATA

MODEL	FREQUENCY			FORCE OUTPUT			AIR CONSUMPTION		
	30 PSI	60 PSI	90 PSI	30 PSI	60 PSI	90 PSI	30 PSI	60 PSI	90 PSI
	vpm	vpm	vpm	lbs	lbs	lbs	cfm	cfm	cfm
K-8	25000	31000	35000	29	58	81	2.9	5.1	6.9
K-10	22000	28000	34000	56	106	160	3.2	5.3	7.1
K-13	15000	18000	22000	72	124	196	3.3	5.6	7.9
K-16	13000	17000	19000	101	180	248	4.3	7.1	9.9
K-20	10000	14000	16000	162	275	387	4.6	8.1	12
K-25	9000	12000	14000	209	353	461	5.6	10.2	15.9
K-30	8000	10000	12000	340	556	722	7.6	13.2	20.0
K-36	7000	9000	10000	464	709	911	9.2	16.8	24.0

DIMENSIONS



MODEL	A	Width	C	D	E	F	G	H(BSP)	Weight(lbs)
K-8	1.97"	0.79"	3.38"	2.68"	0.47"	0.27"	1.57"	1/4"	.29
K-10	1.97"	0.79"	3.38"	2.68"	0.47"	0.27"	1.57"	1/4"	.29
K-13	2.56"	0.94"	4.45"	3.54"	0.63"	0.35"	1.97"	1/4"	.57
K-16	2.56"	1.06"	4.45"	3.54"	0.63"	0.35"	1.97"	1/4"	.66
K-20	3.15"	1.30"	5.04"	4.09"	0.63"	0.35"	2.36"	1/4"	1.17
K-25	3.15"	1.50"	5.04"	4.09"	0.63"	0.35"	2.36"	1/4"	1.39
K-30	3.94"	1.73"	6.30"	5.12"	0.79"	0.43"	3.15"	3/8"	2.49
K-36	3.94"	1.97"	6.30"	5.12"	0.79"	0.43"	3.15"	3/8"	2.95